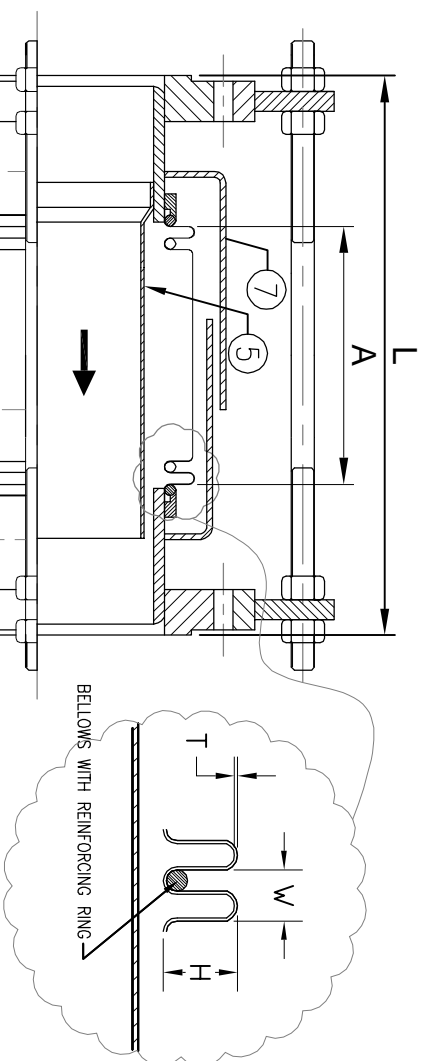
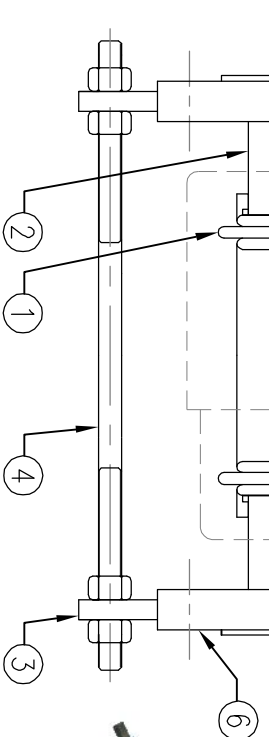


SSEJ-150F-SG-PN16



NOMINAL BORE	TOTAL LENGTH (L) (+/-5mm)	BELLOWS								
		CORRS	NO. PLY	A	H	W	T			
mm	16 BAR	16 BAR	16 BAR	16 BAR	16 BAR					
650	450	600	3	2	180	55	60	1.5x2		
700	450	600	3	2	180	55	60	1.5x2		
750	450	600	3	2	180	55	60	1.5x2		
800	450	600	3	2	180	55	60	1.5x2		
900	550	700	3	3	210	60	70	1.2x3		
1000	550	700	3	3	210	60	70	1.2x3		
1200	550	700	3	3*	210	60	70	1.2x3		

SSEJ-300F-SG-PN25



NOMINAL BORE	TOTAL LENGTH (L) (+/-5mm)	BELLOWS								
		CORRS	NO. PLY	A	H	W	T			
mm	16 BAR	16 BAR	16 BAR	16 BAR	16 BAR					
650	480	630	3	2*	180	55	60	1.5x2		
700	480	630	3	2*	180	55	60	1.5x2		
750	480	630	3	2*	180	55	60	1.5x2		
800	480	630	3	2*	180	55	60	1.5x2		
900	580	730	3	2*	210	60	70	1.5x2		
1000	580	730	3	2*	210	60	70	1.5x2		
1200	580	730	3	3*	210	60	70	1.5x3		

* WITH STRENGTHEN RINGS

MODEL - SSEJ-150F / 300F-SG



MODEL - SSEJ-150F / 300F

FLANGED ENDS - BS3293 PN16 / PN25
FOR THE RODS ADD "SG" SUFFIX
FOR EXTERNAL SHROUD ADD "ES" SUFFIX

WORKING PRESSURE : 16 bar / 25 bar
WORKING TEMPERATURE : -50°C to +450°C
AXIAL MOVEMENT : + / -25mm

STANDARD FINISH
FLANGES / GUSSETS : GALVO PAINT
CONTROL ROD : ZINC PLATED
& HARDWARE

WARNING : - Control units must be used to protect this part from excessive movement if piping is not properly anchored.

MODEL - SSEJ-150F / 300F-SG-ES



ITEM	PARTS	MATERIAL
1	BELLOWS	SST304 (2 PLY)
2	TUBE	CARBON STEEL
3	GUSSET	CARBON STEEL
4	TIE RODS	CARBON STEEL
5	INNER SLEEVE	SST304
6	FLANGE	CARBON STEEL
7	EXTERNAL COVER	MILD STEEL

OTHER MATERIALS/FINISH AVAILABLE ON REQUEST